

FEATURES

- Provisions for Panel Mounting
- Suitable for Industrial use
- Single bypass port
- Extremely reliable
- Easy maintenance

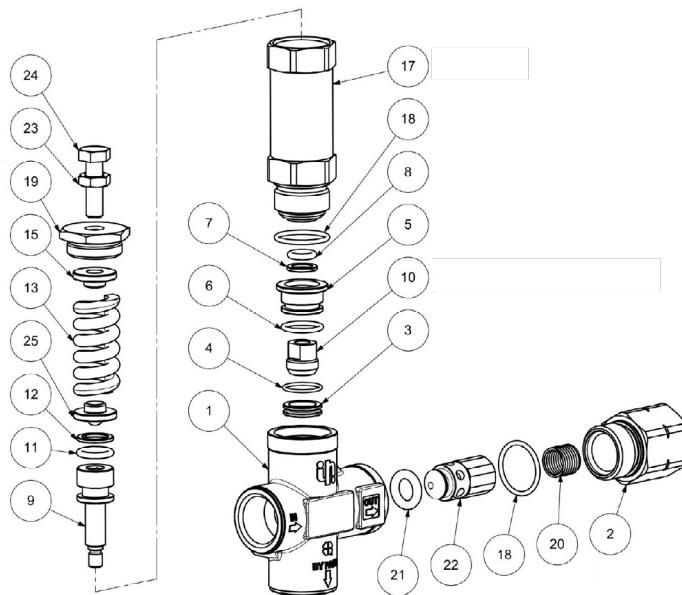


SPECIFICATIONS

Part Number	ZH1520
Min -Max Volume	5.28 - 52.8 GPM
Max Operating Pressure	2,465 PSI
Max Temperature	185° F
Port Sizes	Inlet: 1" NTP-F
	Outlet: 1" NPT-F
	Bypass: 1" NPT-F
Dimensions	8.27" x 5.07" x 1.81"
Weight	4.4 lbs.

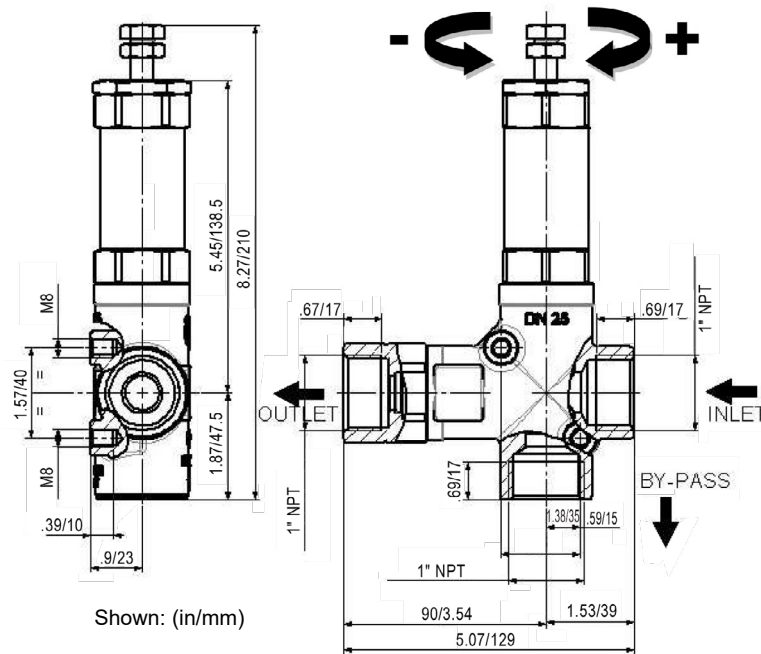
General Pump recommends using a safety relief device in conjunction with this unloader valve when installed on a positive displacement pump. General Pump is not liable and assumes no responsibility when used in a customer's high pressure system.

PARTS LIST



No.	Part No.	Description	Qty.
1	36358741	Body	1
2	36358470	Fitting	1
3*	36354556	Seat, Ø16	1
4*	90359800	O-ring, Ø 20.35 x 1.78	1
5	36353760	Reduction bushing	1
6*	90384700	O-ring, Ø 20.24 x 2.62	1
7*	90507350	Anti-extrusion ring, 12 x 18.2 x 2	1
8*	90403100	O-ring, Ø 10.69 x 3.53	1
9	36354456	Piston	1
10*	36354756	Valve	1
11*	90403500	O-ring, Ø 15.47 x 3.53	1
12*	90509150	Anti-extrusion ring, 15.8 x 22 x 2	1
13	94750900	Spring, Ø 21 x 60	1
15	36358260	Spring Guide	1
17	36358570	Piston Housing	1
18*	90386300	O-ring, Ø 28.25 x 2.62	2
19	36358070	Plug, top	1
20	94745800	Spring, Ø 16.7 x 29.0, Inox	1
21*	90472000	O-ring, Ø 12.07 x 5.34	1
22	36353870	Check valve	1
23	92237500	Nut, M10	1
24	99369800	Screw, M10 x 35	1
25	36606901	Spring guide, complete	1
*	F2485	Repair Kit, ZH1520	

No.	Torque Specs
2	26.98 ft. lbs. / 120 Nm
10	3.37 ft. lbs / 15 Nm
17	22.48 ft. lbs. / 100 Nm
19	11.24 ft. lbs. / 50 Nm

DIMENSIONS**SELECTION AND OPERATION**

THIS DOCUMENT PROVIDES THE INSTRUCTIONS FOR THE INSTALLATION, USE AND MAINTENANCE OF THE VALVE, THEREFORE IT IS AN INTEGRAL PART OF THE VALVE ITSELF AND MUST BE READ CAREFULLY BEFORE ANY USE AND KEPT WITH CARE. STRICTLY COMPLY WITH THE INSTRUCTIONS CONTAINED IN THIS DOCUMENT IN VIEW OF A SAFE AND EFFECTIVE USE OF THE VALVE. FAILURE TO COMPLY WITH THESE INSTRUCTIONS MIGHT CAUSE EARLY FAULTS AND RESULT IN SITUATIONS OF DANGER, IN ADDITION TO VOIDING ANY WARRANTY.

1-GENERAL INFORMATION:

1.1 - The ZH1520 automatic pressure regulator is a manually-adjustable, pressure-operated device which, according to its setting, limits the pump/system pressure by conveying the excess of water to the by-pass. Moreover, when the outlet flow is blocked, this device totally releases the flow - and keeps under pressure the portion of the system following the valve, while it sets the pressure to zero in the portion of the system preceding the valve.

2-WARNINGS:

2.1 - To ensure the tightness of the fittings used to connect the valve to the system, interpose a metal washer with a rubber ring or insert an appropriate sealing on the thread and tighten them.

2.2 - Use guns or other control devices ensuring a perfect seal when closed. Leakages may compromise the correct functioning of the valve.

3-INSTRUCTIONS FOR CALIBRATION:

The valve is calibrated to the maximum pressure value shown in the table, **IT IS NOT ALLOWED TO EXCEED THIS VALUE**

3.1 - Connect the valve to the water system and follow these steps:

3.2 - Unloose the adjustment knob pos. 24 in order to completely release the spring.

3.3 - Open the gun or the water control device and start the system. Make sure that the air contained in it is fully ejected.

3.4 - Keeping the gun or the water control device open, start adjusting the pressure by screwing down the knob pos. 27. Alternate the adjusting operations with a few openings and closings of the gun or of the control device. When the desired pressure has been reached, open and close the gun/control device a few times again in order to stabilize the various components (seals, springs etc.). Check the pressure value again and correct if necessary.

3.5 - Lock the nuts pos. 24 by tightening the nut pos. 23.

3.6 - In order to obtain working pressure lower than the maximum set pressure, loosen the nut pos. 23 and turn the screw pos. 24 counter-clockwise.

In case of doubts, do not hesitate to contact the General Pump Customer Service.



IMPORTANT: During use, never exceed the maximum values of pressure, flow-rate and temperature as stated in this document and/or indicated on the valve.

MAINTENANCE

STANDARD: every 400 working hours, check and lubricate the seals with water resistant grease.

SPECIAL: every 800 working hours, check the wear of the seals and internal parts and, if necessary, replace with original GP parts taking care, during installation, to lubricate with water resistant grease.

The manufacturer is not to be considered responsible for damage as a result from incorrect fitting and maintenance.

TROUBLESHOOTING

PROBLEMS	PROBABLE CAUSES	SOLUTIONS
Frequent valve recycles	<ul style="list-style-type: none">• Damaged check valve O-ring• Leaking connections• Restricted bypass or too small diameter of the bypass hose	<ul style="list-style-type: none">• Replace• Check or renew• Clean or adapt passage diameter
Valve does not reach pressure	<ul style="list-style-type: none">• Piston O-rings worn out• Debris between seat and shutter• Seat worn out• Nozzle worn out• Incorrect choice of nozzle	<ul style="list-style-type: none">• Replace• Clean the seat• Replace• Replace• Fit with smaller nozzle
High pressure peaks at gun closure	<ul style="list-style-type: none">• There is not a minimum of 5% of total flow discharged in bypass• Excessive flow in bypass• Adjustment with spring totally compressed	<ul style="list-style-type: none">• Reset Correctly• Change type of valve or adjust passages• Loosen adjustment screw and eventually fit with smaller nozzle
Valve does not discharge at low pressure at gun closure	<ul style="list-style-type: none">• Jammed check valve• Debris on check valve	<ul style="list-style-type: none">• Clean or replace• Clean

WARNING: High Pressure Systems require a primary pressure regulating device (i.e. regulator, unloader) and a secondary pressure relief device (i.e. pop-off valve, relief valve). Failure to install such relief devices properly could result in personal injury or damage to pump or property. GP does not assume any liability or responsibility for the operation of the user's high pressure system.



WARNING: This product can expose you to chemicals including lead, which is known to the state of California to cause cancer and birth defects or other reproductive harm. For more information, go to www.P65Warnings.ca.gov